

PROPERTY DETAILS

WEB ID #: 175739

COOPER & COOPER
REAL ESTATE

356 West 23rd Street, #4A – Chelsea

Cross Streets: 8th Avenue & 9th Avenue



DETAILS

Web ID #:	175739	Rooms:	4
Price:	\$799,000	Bed(s):	2
Type:	Co-op	Bath(s):	1
Size:	2 Bedroom	Maintenance:	\$1,078
Down:	20%		
Approx. SqFt:	N/A		

BUILDING FEATURES

Pets Allowed	Wood Floors	Laundry Room
High Ceilings	Exposed Brick	

CONTACT



Michella Lind

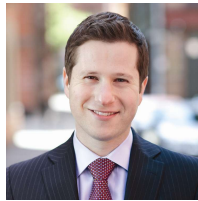
Lic. R.E. Salesperson

C: 917.273.2433

O: 212.864.4555

F: 212.706.2939

E: michella.lind@coopercooper.com



Jordan Cooper

Partner

Lic. R.E. Broker

C: 917.853.9468

O: 212.864.4555

F: 212.706.2939

E: jordan.cooper@coopercooper.com



All information furnished regarding the property for sale, rental or financing is from sources deemed reliable, but no warranty or representation is made as to the accuracy thereof and same is submitted subject to errors, omissions, change of price, rental or other conditions, prior sale, lease or financing or withdrawal without notice. All dimensions are approximate. For exact dimensions you must hire an engineer or architect. Property photos are representative of finishes. Actual finishes may vary.

356 West 23rd Street, #4A – Chelsea

Cross Streets: 8th Avenue & 9th Avenue

WE OFFER A WIDE RANGE OF RESIDENTIAL SERVICES

Rentals

Townhouses / Brownstones
Elevator Buildings
Lofts
Luxury Doorman Hi-Rises
Pre-War & Post-War Homes

Sales

Condominiums (Condos)
Co-operatives (Co-ops)
Townhouses
Brownstones

Investment Properties

Relocation

Management

DESCRIPTION

JUST LISTED!

356 West 23rd Street, Apt. 4A
Rare 2 Bedroom Find In Chelsea

THE APARTMENT: Prewar Walk-Up Building, Top Floor Home w/ Soaring Ceilings, Dramatic 8Ft Living Room Skylight, w/ 2nd Skylight In Office/Bedroom, Walls Of Exposed Brick In Every Room, Northern Exposure w/ Open Sky & Park Views, Double Layer Quiet Windows, Hardwood Plank Floors, Tall & Deep Custom Closets, Additional Overhead Storage, Fully-Equipped Modern Kitchen w/Granite Countertops, Subway Tile Bath w/ Kohler Pedestal Sink, Bedroom Has Custom Built-Ins & Floor-To-Ceiling Bookcase, Through-The-Wall A/C Units w/ Custom Covers, Digital Nest Smart Thermostat

THE BUILDING: Intimate Prewar Co-op Townhouse, Planted Courtyard/Garden, Allows Pied-A-Terres On A Case-By-Case Basis

THE AREA: Nestled In The Heart Of Chelsea, Conveniently Located Near Multiple Subway Lines (C, E, 1, F, M and NJ Path), Gallery District, Meatpacking District, Tech Corridor, Restaurants & The High Line Park

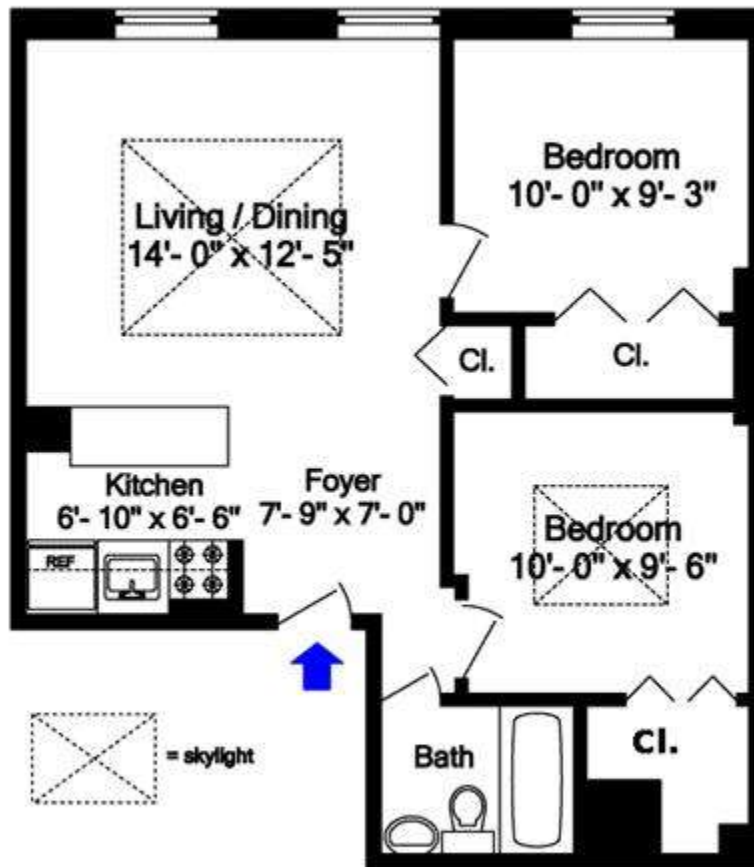
PROPERTY DETAILS

WEB ID #: 175739

COOPER & COOPER
REAL ESTATE

356 West 23rd Street, #4A – Chelsea

Cross Streets: 8th Avenue & 9th Avenue



All information furnished regarding the property for sale, rental or financing is from sources deemed reliable, but no warranty or representation is made as to the accuracy thereof and same is submitted subject to errors, omissions, change of price, rental or other conditions, prior sale, lease or financing or withdrawal without notice. All dimensions are approximate. For exact dimensions you must hire an engineer or architect. Property photos are representative of finishes. Actual finishes may vary.